

RELATIONSHIPS

Knowledge Organiser



Year 6, Summer: Relationships
PSHE Strand: Health Education
Whole School Topic: Why is the Earth so Angry?

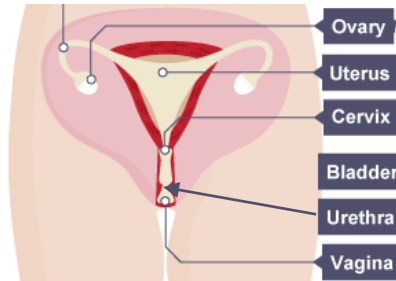
Key Vocabulary

bladder	A sac which collects urine for excretion
ovary	A female reproductive organ in which eggs are produced
cervix	The narrow passage forming the lower end of the uterus.
uterus	An organ in females where offspring are conceived and gestate before birth
testis	An organ that produces sperm
penis	The male genital organ
prostate	A gland surrounding the neck of the bladder in males and releases semen
urethra	The tube by which urine is expelled from the body. In males, it also transports semen.
hormones	A substance produced to regulate or stimulate specific cells into action

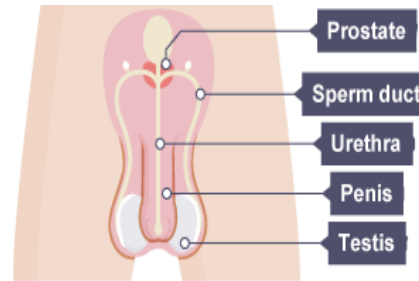
What will I know about relationships by the end of this topic?

- To consider puberty and reproduction
- To consider physical & emotional behaviour in relationships
- To know I have the right to say no.

The male and female reproductive system are activated by hormones during puberty. This enables adults to start a family one day, if they choose to.



Female reproductive system



Male reproductive system

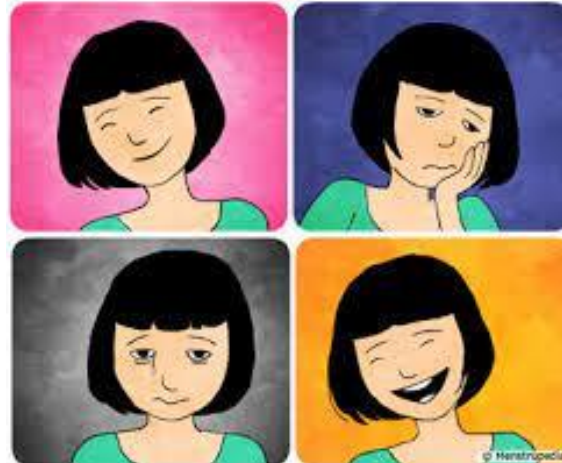
PRIVATES ARE PRIVATE

ALWAYS REMEMBER YOUR BODY BELONGS TO YOU

NO MEANS NO

TALK ABOUT SECRETS THAT UPSET YOU

SPEAK UP, SOMEONE CAN HELP



Your emotions can change due to hormones and how you feel at different times. This is normal and you can always talk to someone you trust



I don't like it!

In relationships, such as friendships, people can show physical behaviours, such as high-fives and hugging. Remember you do not have to accept any unwanted touch from anyone and have the right to no as it is your body.

My Body My Rules